

# FORCE® PRO TROLLING MOTOR



## PRODUCT OVERVIEW

Move fast, move quiet with the Force Pro trolling motor — engineered with a powerful motor and our most precise positioning technology. With its scissor-style mount and choice of 50" or 57" shaft lengths, it's designed specifically for bass boats. See everything around your boat with brilliant high-definition scanning sonar with the built-in all-in-one GT56UHD-TR transducer.

Once you've found the spot, stay put with our most precise anchor lock technology, now featuring reverse prop spin and calm-water cable unwrap to reduce motor activity. Make speed and steering adjustments wirelessly from anywhere on the boat with the included foot pedal or included remote with gesture control. You can also use your compatible chartplotter to draw a route, and the trolling motor will automatically navigate while you fish. The lighted indicator on the trolling motor shaft cap means you can fish in low-light conditions and always know what direction you're headed.



# FORCE® PRO TROLLING MOTOR

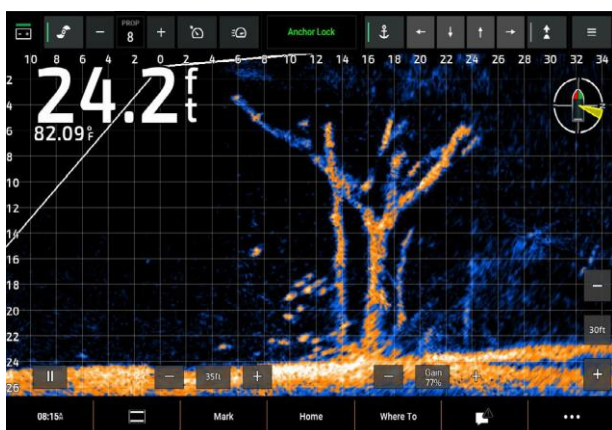
## KEY FEATURES

### ANCHOR LOCK

NEW

Multiband GPS provides our most precise boat positioning technology when in anchor lock or heading hold, or while following a route.

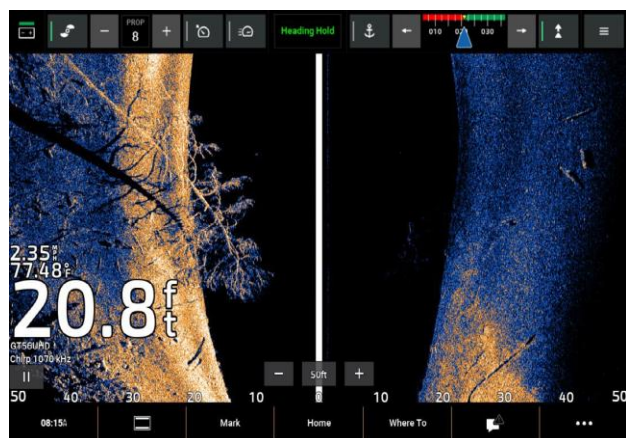
New software optimises anchor lock for your fishing conditions. These improvements reduce steering activity while in anchor lock. New software features include automatic reverse propeller spin and calm-water cable unwrap.



### PREMIUM SONAR

NEW

Force Pro includes the improved all-in-one [GT56UHD-TR](#) transducer, so you can see everything around your boat with brilliant high-definition scanning sonar.



### LIGHTED INDICATOR

NEW

Fish in low light, and always know what direction you're headed with the lighted indicator on the trolling motor shaft cap.



### TWO PROPELLER OPTIONS

NEW

The Force Pro trolling motor includes a high-efficiency and a weedless propeller in the box.

Fishing in heavy vegetation? The weedless propeller is designed to cut through vegetation to prevent weeds from wrapping around the prop and shaft.



The high-efficiency propeller is designed for maximum efficiency and thrust, bringing you peak performance in open water.



### MANUAL REVERSE

NEW

The new manual reverse feature allows you to control the propeller in reverse. You can blow off vegetation or apply thrust in reverse without spinning the motor around.

### AUTO FORWARD FEATURE

NEW

The auto forward feature pre-aligns the motor so it's forward facing upon deployment and is ready to move fast and quiet through the water.

# FORCE® PRO TROLLING MOTOR

## KEY FEATURES - CONTINUED

### HIGH POWERED

The brushless motor on Force Pro provides legendary power and performance, as well as premium efficiency, with 100 lbs of thrust<sup>1</sup>.

### DESIGNED TO ENDURE

The Force Pro trolling motor is built with advanced corrosion and saltwater protection for harsh marine environments.

### PERFECT FOR BASS BOATS

Deploy and stow the motor with ease, thanks to dual gas springs and a durable pull cable. The 50-inch and 57-inch shaft lengths accommodate different boat sizes and deck configurations. And the included weedless and high efficiency propellers can be easily swapped as needed.



# FORCE® PRO TROLLING MOTOR

## KEY FEATURES - CONTINUED

### WIRELESS INTEGRATION

Make speed and steering adjustments wirelessly from anywhere on the boat with the included foot pedal or remote.

The foot pedal offers instant response, while the remote allows you to use point-and-go and gesture steering.

Or take control from your connected compatible Garmin chartplotter or wearable (both sold separately).



### POWER-POLE® INTEGRATION

By networking, select Garmin chartplotters with the Force Pro trolling motor and your compatible Power-Pole shallow water anchor, you can access advanced boat control features including smart anchor auto-deployment, smart anchor jog, auto stow, anchor drag detection and end-of-route anchoring, resulting in improved boat control for shallow water fishing.



## PRODUCT CONFIGURATIONS

HTS: 9014900000

### FORCE PRO TROLLING MOTOR

50" OR 57" BLACK



INCLUDES	COUNTRY OF ORIGIN
50" or 57" black Force Pro trolling motor, high-efficiency propeller, weedless propeller, foot pedal, remote, stabiliser, assembly and mounting hardware and document	Made in Taiwan. Cables made in Taiwan or China

DESCRIPTION	SKU	UPC	RRP
Force Pro Trolling Motor, 50", Black with Built-in GT56UHD-TR Transducer	010-03011-00	753759341930	€4,499.99
Force Pro Trolling Motor, 57", Black with Built-in GT56UHD-TR Transducer	010-03011-10	753759341947	€4,699.99

FORCE® PRO TROLLING MOTOR

PRODUCT COMPARISON



TROLLING MOTOR SPECS		
SHAFT LENGTH	50"/57" (black)	48"/ 63"/75" (black) 48"/ 63"/ 75"/90" (white)
FOR USE IN	Freshwater, brackish water and saltwater	Freshwater, brackish water and saltwater
MOUNTING LOCATION	Bow	Bow
MOUNT STYLE	Scissor-style mount	Pivot-style mount
MAX THRUST	100 lbs¹ (per ISO 13342) using high-efficiency propeller at 36 VDC; 80 lbs per ISO 13342 using high-efficiency propeller at 24 VDC	100 lbs¹ (per ISO 13342) using high-efficiency propeller at 36 VDC; 80 lbs per ISO 13342 using high-efficiency propeller at 24 VDC
VOLTAGE	24 or 36 volts	24 or 36 volts
ELECTRIC STEERING	Yes	Yes
LIFT-ASSIST	Dual gas springs	No
BUILT-IN HEADING SENSOR	Yes	Yes
BUILT-IN GPS	Yes (dual frequency GPS)	Yes (dual frequency GPS)
WARRANTY	3-year, limited lifetime on shaft	3-year, limited lifetime on shaft
WATER RATING (COMPONENTS ABOVE WATER)	IPX7	IPX7
WIRELESS REMOTE INCLUDED	Yes (included)	Yes (included)
FOOT PEDAL COMPATIBLE	Yes (included)	Yes
BATTERY INDICATOR	Yes	Yes
VARIABLE SPEED CONTROL	Yes (20 steps)	Yes (20 steps)
LIGHTED DIRECTION INDICATOR	Yes	Yes
DECK STABILISER INCLUDED	Yes	90" white model only
MANUAL REVERSE CONTROL	Yes	Yes
SONAR SPECS		
FREQUENCIES SUPPORTED	Traditional: high-wide CHIRP (150–240 kHz) ClearVü™/SideVü™ : 455 kHz, 800kHz, 1000kHz	<b>Black models only:</b> Traditional: high-wide CHIRP (150–240 kHz) ClearVü/SideVü: 455 kHz, 800kHz, 1000kHz
TRANSMIT POWER	Traditional: 350 watts ClearVü/SideVü: 500 watts	<b>Black models only:</b> Traditional: 350 watts ClearVü/SideVü: 500 watts
MAXIMUM DEPTH	CHIRP sonar: 800' freshwater ClearVü: 400'; SideVü: 500 ft	<b>Black models only:</b> CHIRP sonar: 800' freshwater ClearVü: 400'; SideVü: 500'
DEPTH/SPEED/TEMPERATURE	Depth and temperature	<b>Black models only:</b> Depth and temperature
NUMBER OF PINS	12-pin (orange connector)	12-pin (orange connector)
LIVESCOPE™ CABLE INTEGRATION	No	Yes (accessory LiveScope™ transducer and Force® Kraken mounting bracket purchases required)
QUATIX® REMOTE CONTROL SUPPORTED	Yes	Yes
AUTOPILOT FEATURES		
ROUTE FOLLOWING	Yes	Yes
ANCHOR LOCK	Yes	Yes
SMART ANCHOR LOCK FEATURES	Yes	Yes
ANCHOR LOCK JOG	Yes	Yes
HEADING HOLD	Yes	Yes
CRUISE CONTROL	Yes	Yes
GESTURE FEATURES	Yes (manual+, heading hold+, jog+)	Yes (manual+, heading hold+, jog+)



FORCE® PRO TROLLING MOTOR

ACCESSORY SPECIFICATIONS

FOOT PEDAL		REMOTE CONTROL	
Dimensions	12" L x 9" W x 4 1/2" H	Display size	1.2" (30.4 mm) diameter
Wireless communication	Yes	Display resolution	240 x 240 pixels
Power installation	12-volt wired, or battery powered (2 AA)	Display type	Colour, sunlight-visible, transfective memory-in-pixel (MIP)
AA battery life	1 full season	Chartplotter user- programmable keys	Yes
Waterproof rating	IPX7	Autopilot feature control	Yes
Adjustable pedal	Yes	Water rating	IPX7
		Battery life	Typical use with backlight at low, 43 weeks
		Floats	Yes

PACKAGING SPECIFICATIONS

	FORCE PRO TROLLING MOTOR, 50"	FORCE PRO TROLLING MOTOR, 57"	GT56UHD-TR TRANSDUCER	PULL HANDLE AND CABLE	TRANSDUCER REPLACEMENT KIT
Gift box dimensions (WxHxD)	65.4" x 11.4" x 18.7" (1660.0 x 290.0 x 475.0 mm)	72.3" x 11.4" x 18.7" (1837.0 x 290.0 x 475.0 mm)	5.6" x 11.5" x 4.4" (142.0 x 289.0 x 112.0 mm)	5.6" x 5.4" x 2.3" (141.0 x 138.0 x 58.0 mm)	6.3" x 9.1" x 1.4" (160.0 x 231.1 x 35.6 mm)
Gift box weight	91.2 lbs (41.36 kg)	101.0 lbs (45.83 kg)	2.3 lbs (1046 g)	0.37 lbs (167.5 g)	0.46 lbs (208.5 g)
Master carton dimensions (WxHxD)	65.4" x 11.4" x 18.7" (1660.0 x 290.0 x 475.0 mm)	72.3" x 11.4" x 18.7" (1837.0 x 290.0 x 475.0 mm)	18.0" x 15.2" x 12.8" (458.0 x 385.0 x 325.0 mm)	18.1" x 17.9" x 12.2" (460.0 x 455.0 x 310.0 mm)	19.3" x 14.1" x 15.6" (490.0 x 359.0 x 397.0 mm)
Master carton weight	91.2 lbs (41.36 kg)	101.0 lbs (45.83 kg)	22.8 lbs (10334 g)	17.62 lbs (7992 g)	19.29 lbs (8752 g)
Master carton quantity	1	1	9	42	36

COMPATIBLE APPS

ACTIVECAPTAIN®



This free all-in-one mobile app allows you to manage your marine experience from nearly anywhere.

Configure your Force Pro trolling motor with the app to access navigation features and control the trolling motor from your compatible chartplotter or smart device.

# FORCE® PRO TROLLING MOTOR

## COMPATIBLE PRODUCT OVERVIEW

### GPSMAP® 9000 CHARTPLOTTER SERIES



The industry's first integrated 4K resolution touchscreen chartplotter. Enjoy edge-to-edge clarity and luxury on a glass helm with premium design and materials plus enhanced connectivity and speed.

### GPSMAP x3 CHARTPLOTTER SERIES



With its sleek design, powerful processing and upgraded IPS display, this advanced 7", 9", 12" or 16" chartplotter integrates seamlessly into your Garmin marine system.

### GPSMAP 8400 CHARTPLOTTER SERIES



The easy-to-use, easy-to-install chartplotter/sonar combo delivers MFD performance in a combo-size package.

### ECHOMAP™ ULTRA 2 CHARTPLOTTER SERIES



You're an angler who wants premium fishfinding features in a fast, supersharp chartplotter with big 10" or 12" IPS touchscreen display, keyed assist controls, maps, LiveScope™ sonar compatibility and more. This is the one.

### ECHOMAP UHD2 6/7/9xsv CHARTPLOTTER SERIES



You want to know the water better than a local. With best-in-class sonar, wireless networking and built-in Garmin Navionics+™ mapping, the ECHOMAP UHD2 chartplotters fit the bill.

### ECHOMAP ULTRA CHARTPLOTTER SERIES



Choose from 10" or 12" models with keyed- assist touchscreen displays, built-in support for our premium sonars and preloaded Garmin Navionics+ inland and coastal mapping.

### ECHOMAP UHD 7/9xsv CHARTPLOTTER SERIES



Choose from 7" or 9" touchscreens with keyed-assist controls, built-in support for ultra high-definition scanning sonars, mapping, sonar sharing, network capabilities and more.

### FÈNIX® 8 SERIES



Premium multisport GPS smartwatch with solar charging or AMOLED display.

### DESCENT™ MK3 SERIES



Premium watch-style dive computer with GPS, an AMOLED display and multisport capabilities.

### QUATIX® 7 SERIES



Premium boating smartwatch with GPS.

### FÈNIX 7 SERIES



Premium multisport GPS smartwatch with built-in flashlight.

### ENDURO™ 2



Premium ultra running smartwatch with GPS plus advanced training metrics and maps.

### EPIX™ (GEN 2) SERIES



Premium multisport GPS smartwatch with an AMOLED display and built-in flashlight.

### MARQ® (GEN 2) SERIES



Luxury GPS tool watch with an AMOLED display, carbon fibre case and multisport capabilities.

### D2™ MACH 1 SERIES



Premium aviator smartwatch with GPS, an AMOLED display, multisport capabilities and a built-in flashlight.

FORCE® PRO TROLLING MOTOR

COMPATIBLE ACCESSORY OVERVIEW

GT56UHD-TR  
TRANSDUCER  
NEW



Use this transducer on your compatible Force or Force Pro trolling motor.

SKU: 010-02732-04  
UPC: 753759350635  
RRP: €474.99

PULL HANDLE AND  
CABLE  
NEW



Replace the pull handle and cable on your compatible Force trolling motor with these standard pieces.

SKU: 010-13915-00  
UPC: 753759350642  
RRP: €69.99

TRANSDUCER  
REPLACEMENT KIT  
NEW



Easily remove, replace or upgrade your built-in Garmin transducer on your compatible trolling motor with this kit. It's recommended to replace all O-rings and compression seals so your motor returns to its original factory waterproof sealing. Nose cone not included.

SKU: 010-13915-10  
UPC: 753759350659  
RRP: €49.99

REMOTE CONTROL



The handheld remote control with a sunlight-readable, transreflective display offers total control of the Force trolling motor along with unique point-and-go gesture steering capabilities. There are also user-programmable keys on the remote that you can use for controlling your chartplotter. No need to worry if the remote takes a trip overboard — it's water-resistant, meaning it will float.

SKU: 010-12833-00  
UPC: 753759217778  
RRP: €289.99

HIGH-EFFICIENCY  
PROPELLER



Designed for maximum efficiency, this replacement propeller runs longer and quieter.

SKU: 010-12832-00  
UPC: 753759217709  
RRP: €79.99

WEEDLESS  
PROPELLER



Fishing in heavy vegetation? This propeller is designed to prevent weeds from wrapping around the prop and shaft.

SKU: 010-12832-01  
UPC: 753759217716  
RRP: €79.99

NOSE CONE,  
STANDARD ROUND



Easily install third-party equipment, including those with traditional clamps, on your compatible trolling motor with this standard, round nose cone.

SKU: 010-12832-22  
UPC: 753759223038  
RRP: €59.99

NOSE CONE WITH  
SMALL TRANSDUCER  
MOUNT



Replace the standard part of your compatible trolling motors or use the nose cone to install a compatible Garmin GT56 model transducer. If you're rerouting a new transducer through the trolling motor shaft, the transducer replacement kit is recommended.

SKU: 010-12832-20  
UPC: 753759217730  
RRP: €59.99

NOSE CONE WITH  
LARGE TRANSDUCER  
MOUNT



Replace the standard part of your compatible trolling motors or use the nose cone to install a compatible Garmin GT56 model transducer. If you're rerouting a new transducer through the trolling motor shaft, the transducer replacement kit is recommended.

SKU: 010-12832-21  
UPC: 753759217747  
RRP: €69.99

DISCONTINUED:

SKU	UPC	DESCRIPTION	EFFECTIVE
010-12832-30	753759217761	Pull Handle and Cable	IMMEDIATELY



# FORCE® PRO TROLLING MOTOR

## COMPATIBLE ACCESSORY OVERVIEW - CONTINUED

### SKEG



Protect your motor and blade from impact by placing a standard skeg on your Force trolling motor.

SKU: 010-12832-18  
UPC: 753759223014  
RRP: €24.99

### STABILISER



Use this stabiliser to replace the stabiliser included with the Force trolling motor.

SKU: 010-12832-50  
UPC: 753759243357  
RRP: €69.99

### WIRELESS FOOT PEDAL



Enjoy the convenience of a wireless foot pedal for the Force trolling motor. It provides instant control and responsiveness yet feels and steers just like a cable-steered pedal. It operates wirelessly using AA batteries, or — if you prefer — it can be hardwired installed.

SKU: 010-12834-00  
UPC: 753759217785  
RRP: €369.99

### FOOT PEDAL POWER CABLE



Connect your compatible Force trolling motor foot pedal to a 12-volt, 24-volt or 36-volt power source with this replacement cable, which features a 2-pin, threaded power connector and bare end wires.

SKU: 010-12832-10  
UPC: 753759217723  
RRP: €24.99

### ANODE KIT



Use this anode kit to replace the anode included with the Force trolling motor.

SKU: 010-12832-35  
UPC: 753759243692  
RRP: €29.99

### POWER PLUG



Use this to add a 70A power plug to your Force trolling motor.

SKU: 010-12832-41  
UPC: 753759243906  
RRP: €44.99

### POWER RECEPTACLE



Use this to add a 70A power receptacle to your Force trolling motor.

SKU: 010-12832-42  
UPC: 753759244989  
RRP: €44.99

### 60A CIRCUIT BREAKER



Use this 60A circuit breaker when installing your Force trolling motor.

SKU: 010-12832-40  
UPC: 753759246495  
RRP: €74.99

<sup>1</sup>In compliance with ISO standard 13342  
Engineering enhancements are ongoing and may not be reflected in the pictures, videos and specifications.